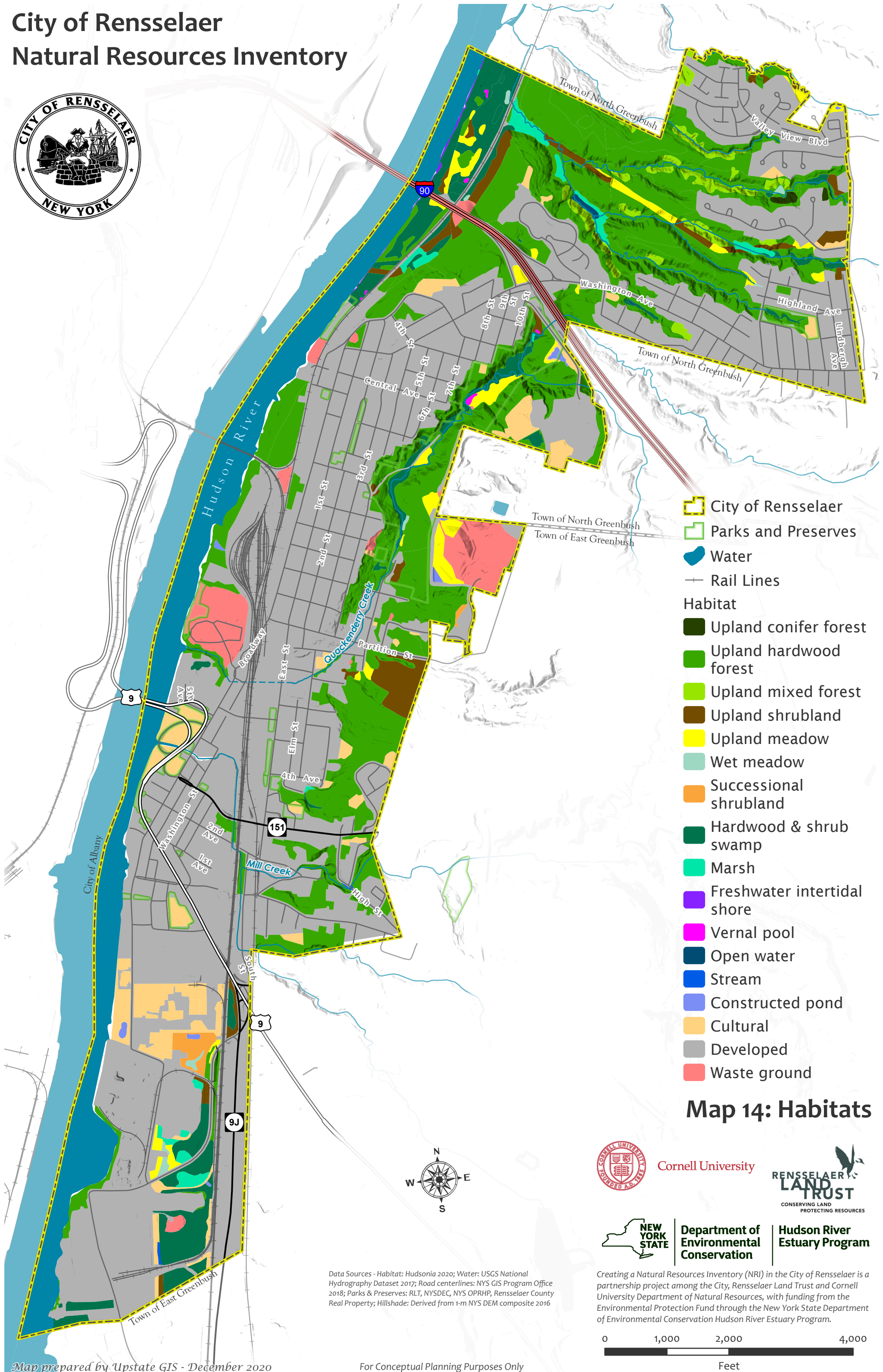
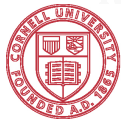


City of Rensselaer Natural Resources Inventory



- City of Rensselaer
- Parks and Preserves
- Water
- Rail Lines
- Habitat
 - Upland conifer forest
 - Upland hardwood forest
 - Upland mixed forest
 - Upland shrubland
 - Upland meadow
 - Wet meadow
 - Successional shrubland
 - Hardwood & shrub swamp
 - Marsh
 - Freshwater intertidal shore
 - Vernal pool
 - Open water
 - Stream
 - Constructed pond
 - Cultural
 - Developed
 - Waste ground

Map 14: Habitats



Cornell University



Department of
Environmental
Conservation

Hudson River
Estuary Program

Data Sources - Habitat: Hudsonia 2020; Water: USGS National Hydrography Dataset 2017; Road centerlines: NYS GIS Program Office 2018; Parks & Preserves: RLT, NYSDEC, NYS OPRHP, Rensselaer County Real Property; Hillshade: Derived from 1-m NYS DEM composite 2016

Creating a Natural Resources Inventory (NRI) in the City of Rensselaer is a partnership project among the City, Rensselaer Land Trust and Cornell University Department of Natural Resources, with funding from the Environmental Protection Fund through the New York State Department of Environmental Conservation Hudson River Estuary Program.

